

# Benefits of Palliative Care Consultation in a Medical ICU

Bethany Kapp, MD; Jennifer Healy, DO; Shuko Lee, MS; and Sandra Sanchez-Reilly, MD

University Health System, South Texas Veterans Health Care System, The University of Texas Health Science Center at San Antonio



## Background

- Inpatient palliative care consultation (PCC) can reduce both length of hospitalization and inpatient costs among seriously ill individuals who are admitted to the intensive care unit (ICU).<sup>1,2,3</sup>
- More information on the cost impact of medical ICU (MICU) PCC may contribute to additional support from hospital administrators and ultimately more resources to care for terminally ill patients.

## Objective

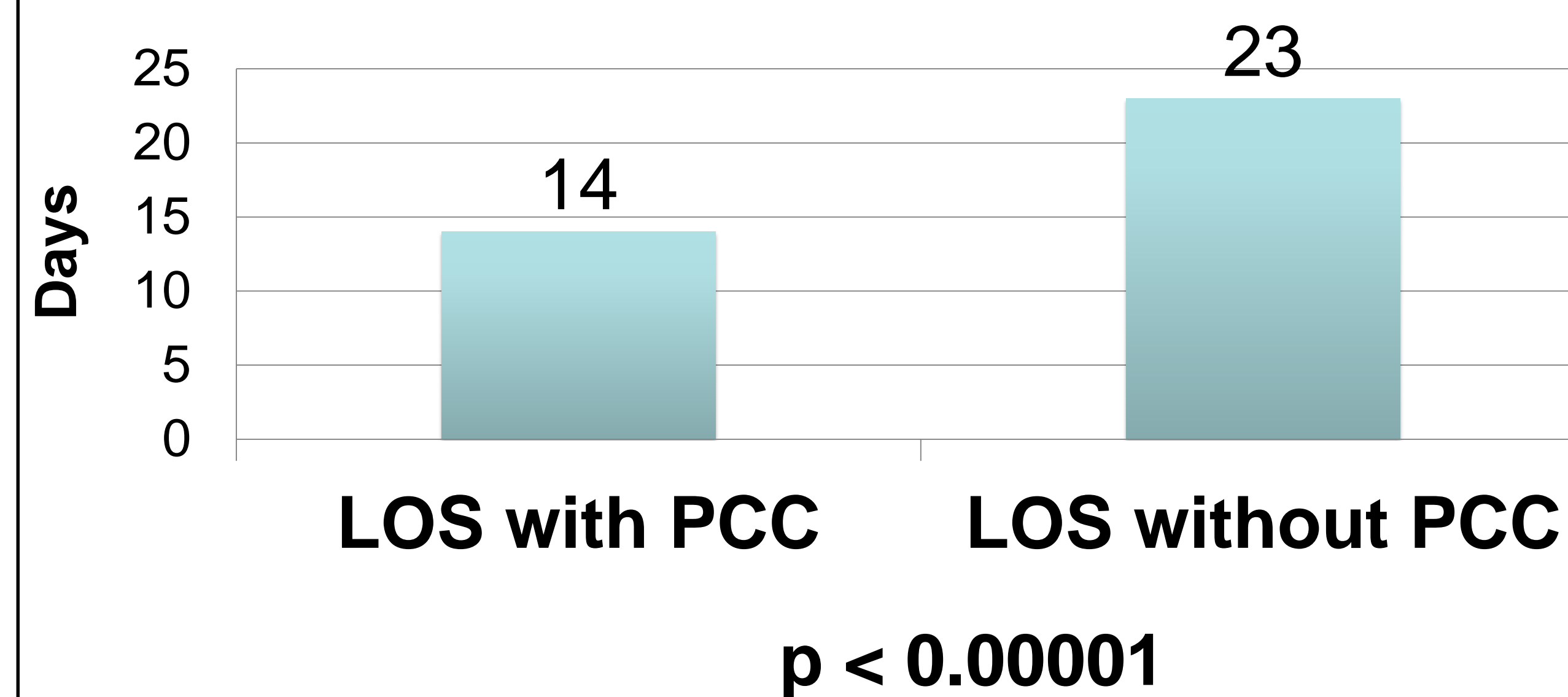
To compare admission rates, readmission rates and inpatient costs for MICU patients who received a PCC vs matched MICU patients who received usual standard of care.

## Methods

- Retrospective chart review of patients admitted to the MICU at tertiary county teaching hospital
- Used de-identified data for a 40 month period (January 2012-April 2015).
- 1449 patients identified with 3829 visits to the MICU during study time frame.
- Patients receiving PCC matched with usual care patients using DRG
- N = 1347 matched, 40% female. 931/1347 had a PCC.

## Results

### Effect of PCC on Length of Stay



### Mean # of MICU readmissions

With PCC	1.05
Without PCC	1.08

P < 0.089

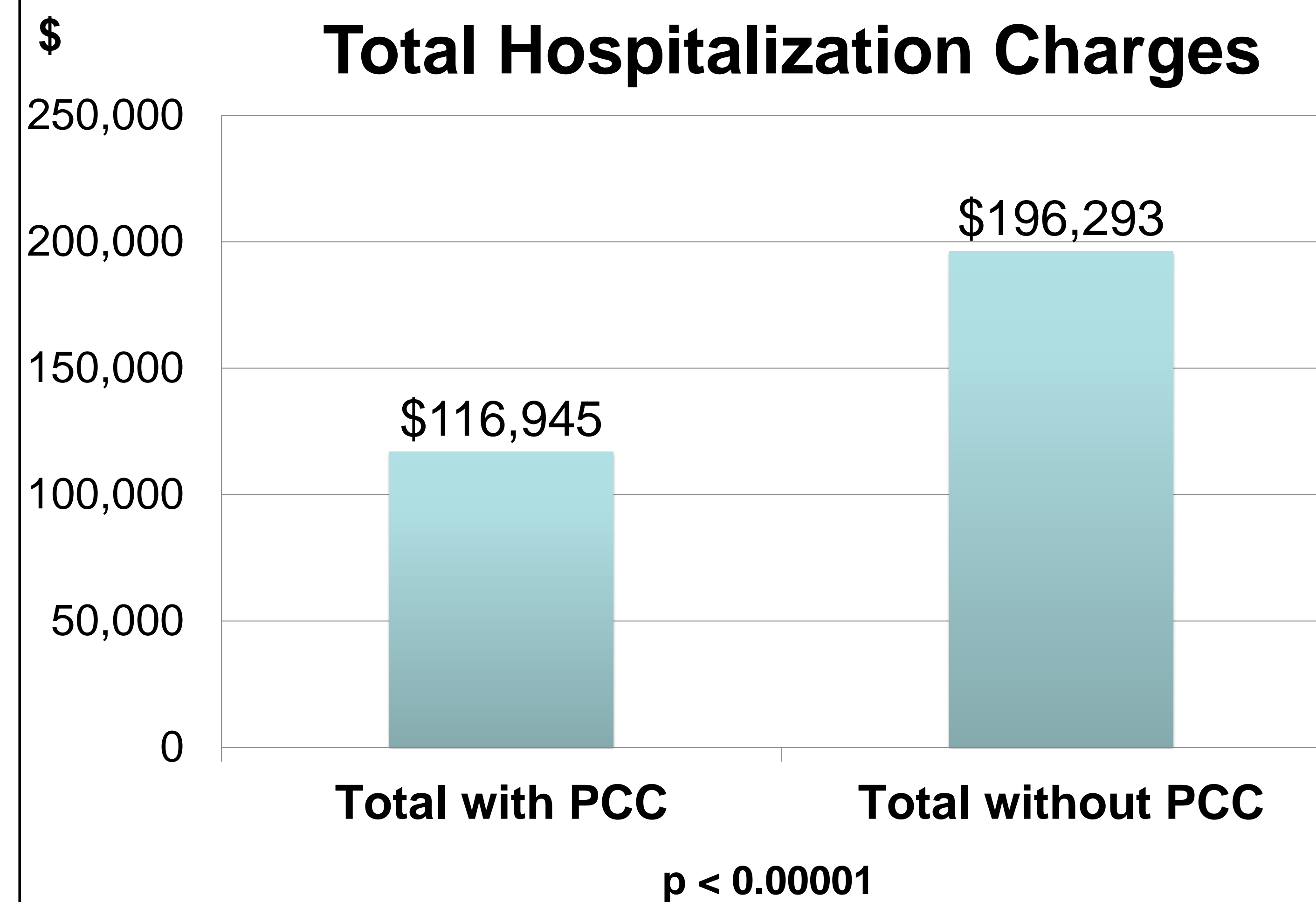
## Conclusions

- MICU PCC decreased both length of stay and inpatient costs.
- Although not significant, repeat MICU admissions trended down with PCC.

## Future Directions

PCC can be an effective way to reduce health care expenditures in critically ill patients and further studies are needed to determine specific PCC benefits among patients with specific diagnoses.

### Effect of PCC on Total Hospitalization Charges



## References

1. Campbell ML, Guzman JA. Impact of a proactive approach to improve end-of-life care in a medical ICU. *Chest* 2003;123(1):266-271.
2. Morrison R.S., Penrod J.D., Cassel J.B., et al. Cost savings associated with US hospital palliative care consultation programs. *Arch Intern Med*. 2008 Sep 8;168(16):1783-90. doi: 10.1001/archinte.168.16.1783.
3. May P1, Normand C, Morrison RS. Economic impact of hospital inpatient palliative care consultation: review of current evidence and directions for future research. *J Palliat Med*. 2014 Sep;17(9):1054-63. doi: 10.1089/jpm.2013.0594. Epub 2014 Jul 1.
4. Smith AG1, Andrews S2, Bratton SL3, et al. Pediatric palliative care and inpatient hospital costs: a longitudinal cohort study. *Pediatrics*. 2015 Apr;135(4):694-700. doi: 10.1542/peds.2014-3161. Epub 2015 Mar 23.