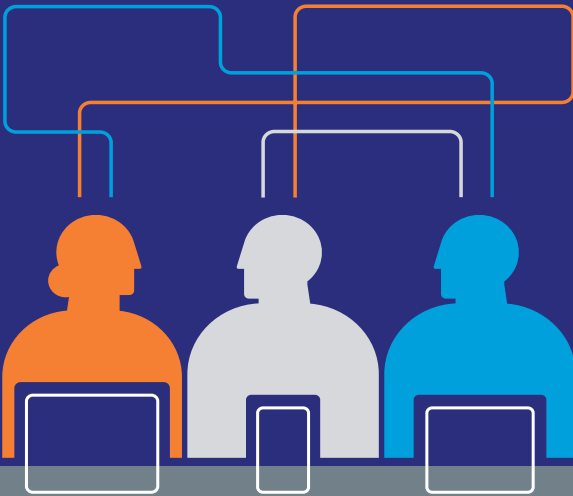


National Seminar

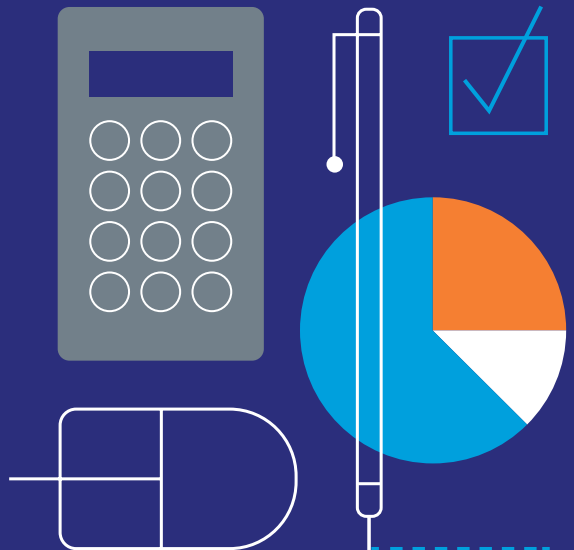
Practical Tools for Making Change



NOV
8-10
2018

Pre-Conference
Workshops

wednesday
NOV 7



Gain the insight and tools necessary to start and sustain a high-quality hospital or community palliative care program.

"I learned so much, even though I have been to the National Seminar six times. Thank you for a great experience!"

2017 SEMINAR ATTENDEE

2018 CAPC NATIONAL SEMINAR THEMES

- Leadership skills and strategic planning
- Measurement and quality
- Program financing
- Hardwiring palliative care into the organizational DNA

WHO SHOULD ATTEND?

All health professionals—from provider organizations, ACOs, and health plans—focused on designing and improving palliative care services for seriously ill people. Program managers, palliative care teams, and administrators from all disciplines and all care settings will find practical tools, innovative models, and a wealth of networking opportunities.

Physicians, nurses, social workers, and case managers earn continuing education credits (number of credits/contact hours pending)

KEYNOTE LINEUP

An inspiring lineup of speakers on the cutting edge of palliative care and the patient experience



Diane E. Meier,
MD, FACP



Edo Banach, JD

Now is the Time: Uniting to Transform Health Care



Elisabeth Rosenthal,
MD

How Patients and Families Pay the Price for Our Broken Health Care System



Jay D. Bhatt, DO

Palliative Care as an Essential Population Health Strategy for Today's Health System



Christy Dempsey,
MSN, MBA, CNOR,
CENP, FAAN

Assessing and Reducing Suffering Using Measures of Patient Experience



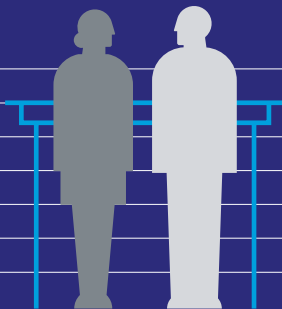
Edward Machtinger,
MD

Trauma-Informed Care: A Case Study in Whole-Patient Care

Pre-Conference Workshops

WEDNESDAY, NOVEMBER 7 | 8:00 AM - 5:00 PM

Boot Camp: Designing Palliative Care Programs in Community Settings



If you are planning to launch or are redesigning a community-based palliative care program, or if you recently launched a program and need solid, practical information to make sure it's robust and sustainable, this interactive workshop is for you. Boot Camp attendees will learn the nuts and bolts of program design: who to serve, what services to offer, how to staff the program, and how to write the business plan.

Who should attend?

- Clinical program leaders and managers
- Operational managers or leaders
- Administrators

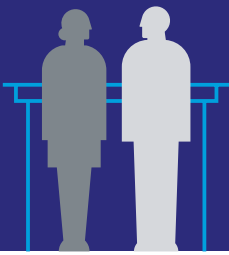
Payment Accelerator: Financial Sustainability for Community Palliative Care Programs



The Payment Accelerator equips community-based palliative care programs with the knowledge and skills to secure sustainable financing. This deep-dive workshop kicks off 12 months of virtual access to experts and resources. Participants will learn about evaluating their strengths and partnership opportunities; pricing and efficiencies; payment models; measurement and reporting; and contracting and negotiation.

Who should attend?

- Clinical program leaders
- Financial, contracting, or business development/ marketing leaders
- Teams of 2-3 strongly encouraged



Boot Camp

Wednesday, November 7

7:00 am - 8:00 am	REGISTRATION AND BREAKFAST	
8:00 am - 8:15 am	WELCOME	Jeanne S. Twohig, MPA, Consultant, Center to Advance Palliative Care
8:15 am - 8:45 am	PLENARY 1: The Blueprint for Designing Palliative Care Programs in the Community	Diane E. Meier, MD, FACP, Center to Advance Palliative Care
8:45 am - 9:00 am	STRETCH BREAK	
9:00 am - 12:00 pm	The Nuts and Bolts of Community-Based Palliative Care Program Design, Part 1 BREAKOUT SESSIONS BY CARE SETTING	
	HOME	<p>Brook Calton, MD, MHS, University of California, San Francisco</p> <p>Martha L. Twaddle, MD, FACP, FAAHPM, HMDC, Northwestern Medicine Lake Forest Hospital</p> <p>Joseph Milano, MD, Northwell Health</p> <p>Donna W. Stevens, MHA, Lehigh Valley Health Network</p> <p>Amy Frieman, MD, Hackensack Meridian Health</p> <p>Abigail Gilbert-Savi, MSN, ANP-BC, CNP, Presbyterian Healthcare Services</p>
	OFFICE/CLINIC	<p>Maria T. Carney, MD, FACP, Northwell Health</p> <p>Constance Dahlin, MSN, ANP-BC, ACHPN, FPCN, FAAN, Consultant, Center to Advance Palliative Care</p> <p>Nancy Guinn, MD, Presbyterian Healthcare Services</p> <p>Darrell Owens, DNP, ANP-BC, GNP-BC, ARNP, ACHPN, UW Medicine at Northwest Hospital and Medical Center</p> <p>Lyn Ceronsky, DNP, GNP, FPCN, CHPCA, Fairview Health Services</p> <p>Michael W. Rabow, MD, University of California, San Francisco</p>
	LONG-TERM CARE	<p>Linda Healy, MSN, FNP-BC, GNP-BC, ACHPN, Motion Picture & Television Fund</p> <p>Rikki Hooper, MBA, MSN, FNP-BC, ACHPN, Four Seasons Compassion for Life</p>
12:00 pm - 1:15 pm	LUNCH	
1:15 pm - 2:00 pm	PLENARY 2: Business Plan Principles for Sustainable Palliative Care in Community Settings	Lynn Hill Spragens, MBA, Spragens & Associates, LLC
2:00 pm - 2:40 pm	PLENARY 3: Understanding Measurement and Metrics	J. Brian Cassel, PhD, Virginia Commonwealth University, Massey Cancer Center

2:40 pm - 3:00 pm	COFFEE BREAK	
3:00 pm - 4:15 pm	The Nuts and Bolts of Community-Based Palliative Care Program Design, Part 2 BREAKOUT SESSIONS BY CARE SETTING	
	HOME	<p>Brook Calton, MD, MHS, University of California, San Francisco</p> <p>Martha L. Twaddle, MD, FACP, FAAHPM, HMDC, Northwestern Medicine Lake Forest Hospital</p> <hr/> <p>Joseph Milano, MD, Northwell Health</p> <p>Donna W. Stevens, MHA, Lehigh Valley Health Network</p> <hr/> <p>Amy Frieman, MD, Hackensack Meridian Health</p> <p>Abigail Gilbert-Savi, MSN, ANP-BC, CNP, Presbyterian Healthcare Services</p>
	OFFICE/CLINIC	<p>Maria T. Carney, MD, FACP, Northwell Health</p> <p>Constance Dahlin, MSN, ANP-BC, ACHPN, FPCN, FAAN, Consultant, Center to Advance Palliative Care</p> <hr/> <p>Nancy Guinn, MD, Presbyterian Healthcare Services</p> <p>Darrell Owens, DNP, ANP-BC, GNP-BC, ARNP, ACHPN, UW Medicine at Northwest Hospital and Medical Center</p> <hr/> <p>Lyn Ceronsky, DNP, GNP, FPCN, CHPCA, Fairview Health Services</p> <p>Michael W. Rabow, MD, University of California, San Francisco</p>
	LONG-TERM CARE	<p>Linda Healy, MSN, FNP-BC, GNP-BC, ACHPN, Motion Picture & Television Fund</p> <p>Rikki Hooper, MBA, MSN, FNP-BC, ACHPN, Four Seasons Compassion for Life</p>
4:15 pm - 4:30 pm	STRETCH BREAK	
4:30 pm - 5:00 pm	PLENARY 4: Harnessing and Synthesizing Boot Camp Discussions: Final Questions	All Boot Camp Faculty
5:00 pm - 5:15 pm	BEYOND BOOT CAMP: WHERE TO HEAD FROM HERE	
5:15 pm - 6:00 pm	BOOT CAMP NETWORKING EVENT	
6:00 pm - 8:00 pm	NATIONAL SEMINAR EVENING REGISTRATION	

SHARE YOUR SEMINAR EXPERIENCE

Follow @CAPCpalliative and
tweet using #CAPCSeminar18





Payment Accelerator Wednesday, November 7

7:00 am - 8:00 am	REGISTRATION AND BREAKFAST
8:00 am - 8:15 am	WELCOME
	VALUE-BASED PAYMENT AND PARTNERING BASICS
8:15 am - 8:30 am	Opening Exercise
8:30 am - 9:15 am	Fundamentals of Value-Based Payment
9:15 am - 10:00 am	Opportunity Assessment
10:00 am - 10:15 am	STRETCH BREAK
	CONTRACTS, PAYMENT, AND COST ANALYSIS
10:15 am - 11:00 am	What's in a Contract
11:00 am - 12:15 pm	Payment Models, Cost, and Pricing
12:15 pm - 1:15 pm	LUNCH
	CONTRACTS, PAYMENT, AND COST ANALYSIS (CONT.)
1:15 pm - 1:45 pm	Payment Models, Cost, and Pricing Wrap-Up
	MEETING CONTRACTUAL OBLIGATIONS AND USING RESOURCES EFFICIENTLY
1:45 pm - 3:00 pm	Program Adaptation
3:00 pm - 3:45 pm	Patient Enrollment and Stratification
3:45 pm - 4:00 pm	COFFEE BREAK
4:00 pm - 5:00 pm	Effective Relationships
5:00 pm - 5:15 pm	Wrap-Up
5:15 pm - 5:30 pm	STRETCH BREAK
5:30 pm - 6:30 pm	NETWORKING RECEPTION WITH WELCOME BY DR. DIANE MEIER
6:00 pm - 8:00 pm	NATIONAL SEMINAR EVENING REGISTRATION

"[The Accelerator] is the most comprehensive program any of us has experienced. Not only did it build our knowledge base, it helped unite our team."

2017 ACCELERATOR ATTENDEE

ACCELERATOR FACULTY

SESSION LEADS:

Torrie Fields, MPH

Blue Shield of California

Tom Gualtieri-Reed, MBA

Spragens & Associates, LLC

Lynn Hill Spragens, MBA

Spragens & Associates, LLC

Kathleen Kerr, BA

Kerr Healthcare Analytics

Dana Lustbader, MD

ProHEALTH Care,
an Optum Company

Allison Silvers, MBA

Center to Advance
Palliative Care

EXPERIENCED PROGRAMS:

Steve Franey, MBA

ResolutionCare

Heather Grant, MD

ProHEALTH,
an Optum Company

Katy Lanz, DNP, MSN,

AGPCNP-BC, ACHPN

Aspire Health

Jill Mendlen, RN

Lightbridge Hospice
and Palliative Care

Toni Messler, BA

Transitions LifeCare

Lori Yosick, LISW-S, CHPCA

Trinity Health

PAYERS:

MaryAnn Christopher,

MSN, RN

Horizon Blue Cross

Blue Shield

Lori Taylor, CPHQ

Blue Cross and Blue

Shield of North Carolina

Kristi Youngs, RN

CareOregon

The CAPC National Seminar App

Create your personal schedule with our new National Seminar mobile app.

- Access presentations and session materials in advance
- Find a colleague, and share notes and contact information
- Receive important updates and event notifications

**DOWNLOAD THE CAPC NATIONAL SEMINAR 2018 APP
IN YOUR DEVICE'S APP STORE IN AUGUST.**

Seminar Agenda

Thursday, November 8

7:00 am - 8:15 am	REGISTRATION AND BREAKFAST		
8:30 am - 9:45 am	KEYNOTE 1: Now is the Time: Uniting to Transform Health Care	<p>Diane E. Meier, MD, FACP, Center to Advance Palliative Care</p> <p>Edo Banach, JD, National Hospice and Palliative Care Organization</p>	
9:45 am - 10:15 am	COFFEE BREAK		
10:15 am - 12:00 pm	INTENSIVE SESSIONS		
* Repeated Thursday afternoon: Intensive B1	A-1 Program Measurement and Demonstrating Value: Strategies for the Inpatient Program	<p>Steve Pantilat, MD, MHM, FAAHPM, University of California, San Francisco</p> <p>Maggie Rogers, MPH, Center to Advance Palliative Care</p>	
	A-2 Program Measurement and Demonstrating Value: Strategies for the Community-Based Program	<p>J. Brian Cassel, PhD, Virginia Commonwealth University, Massey Cancer Center</p> <p>Arif H. Kamal, MD, MHS, Duke Cancer Institute</p>	
* Repeated Thursday afternoon: Intensive B2	A-3 Help, I'm a New Leader: Maintaining Sanity while Learning How to Fly	<p>Lyn Ceronsky, DNP, GNP, FPCN, CHPCA, Fairview Health Services</p> <p>Philip H. Santa-Emma, MD, FAAHPM, Mount Carmel Health System</p>	
	A-4 Getting Paid for What You Do: Hospital Program Financing 101	<p>Andrew E. Esch, MD, MBA, Consultant, Center to Advance Palliative Care</p> <p>Michael W. Rabow, MD, University of California, San Francisco</p>	
	A-5 Why You Need an IT Needs Assessment: EHR Strategies for the Palliative Care Team	<p>Nancy Guinn, MD, Presbyterian Healthcare Services</p> <p>David Y. Ling, MD, University of Virginia Health System</p>	
	A-6 How to Keep Your Program off the Chopping Block	<p>Lynn Hill Spragens, MBA, Spragens & Associates, LLC</p> <p>Donna W. Stevens, MHA, Lehigh Valley Health Network</p>	
	12:15 pm - 1:15 pm	LUNCH and topic-specific networking opportunities in pediatric palliative care, rural initiatives, nurse-led palliative care programs, and primary palliative education	
	1:30 pm - 2:30 pm	KEYNOTE 2: How Patients and Families Pay the Price for Our Broken Health Care System	Elisabeth Rosenthal, MD, Kaiser Health News
2:30 pm - 2:45 pm	STRETCH BREAK		

2:45 pm - 4:30 pm	INTENSIVE SESSIONS
* Repeated Thursday morning: Intensive A1	B-1 Program Measurement and Demonstrating Value: Strategies for the Inpatient Program Steve Pantilat, MD, MHM, FAAHPM, University of California, San Francisco Maggie Rogers, MPH, Center to Advance Palliative Care
	B-2 Program Measurement and Demonstrating Value: Strategies for the Community-Based Program J. Brian Cassel, PhD, Virginia Commonwealth University, Massey Cancer Center Arif H. Kamal, MD, MHS, Duke Cancer Institute
	B-3 Care Transformation through Communication Skills Training: A VitalTalk Workshop Elise C. Carey, MD, FAAHPM, FACP, Mayo Clinic
	B-4 Getting Paid for What You Do: Hospital Program Financing 202 Nancy Guinn, MD, Presbyterian Healthcare Services Rodney O. Tucker, MD, MMM, University of Alabama at Birmingham
	B-5 Leading Effectively: How Developing Individuals Cultivates Team Health JoAnne Reifsnnyder, PhD, MBA, MSN, FAAN, Genesis HealthCare Donna W. Stevens, MHA, Lehigh Valley Health Network
	B-6 Hospices as Providers of Community-Based Palliative Care: Challenges and Opportunities in Building Sustainable Programs Shauna Anderson, MS, RN, Chautauqua Hospice and Palliative Care John Morris, MD, FAAHPM, Four Seasons Compassion for Life
4:45 pm - 5:45 pm	OFFICE HOURS with Seminar faculty for deep-dive Q&A following sessions
5:45 pm - 7:30 pm	POSTER SESSION AND RECEPTION featuring outstanding palliative care teams from across the country and honoring this year's Circle of Life Award™ winners

"I cannot say enough about every aspect of Seminar! I feel so energized, invigorated, and educated as I return to my site."

2017 SEMINAR ATTENDEE

Seminar Agenda

Friday, November 9

7:00 am - 8:15 am	REGISTRATION AND BREAKFAST	
8:30 am - 9:00 am	CAPC 2018 INNOVATION AWARD CEREMONY honoring Amy Berman, RN, LHD, FAAN, The John A. Hartford Foundation	
9:00 am - 10:00 am	KEYNOTE 3: Assessing and Reducing Suffering Using Measures of Patient Experience	Christy Dempsey, MSN, MBA, CNOR, CENP, FAAN, Press Ganey Associates
10:00 am - 10:30 am	COFFEE BREAK	
10:45 am - 12:00 pm	CONCURRENT SESSIONS	
	A-1 Look Before You Leap: The How and Why of Conducting a Needs Assessment	Lyn Ceronsky, DNP, GNP, FPCN, CHPCA, Fairview Health Services Stacie T. Pinderhughes, MD, OptumCare
	A-2 Putting Yourself on the Leadership Track: Building Your Palliative Care Career	Brynn Bowman, MPA, Center to Advance Palliative Care Andrew E. Esch, MD, MBA, Consultant, Center to Advance Palliative Care Robert Parker, DNP, RN, CENP, CHPN, Hospice and Palliative Nurses Association
	A-3 Proactive Identification of the Patients Who Need Us Most	Daniel Hoefer, MD, Sharp HealthCare
	A-4 The Basics of Value-Based Payment	Stacie Sinclair, MPP, LBSW, Center to Advance Palliative Care Kristofer Smith, MD, MPP, Northwell Health
	A-5 Alternative Payment from across the Payer Mix	Torrie Fields, MPH, Blue Shield of California William Kennedy, DO, CareOregon/Housecall Providers Phillip E. Rodgers, MD, FAAHPM, University of Michigan Allison Silvers, MBA, Center to Advance Palliative Care
	A-6 Palliative Care's Role in Addressing the Opioid Crisis	Lynn Hallarman, MD, Stony Brook University Hospital Mary Lynn McPherson, PharmD, MA, MDE, BCPS, CPE, University of Maryland School of Pharmacy
	A-7 Even Small Hospitals Can Have Palliative Care Access and Success	John Morris, MD, FAAHPM, Four Seasons Compassion for Life
12:15 pm - 1:30 pm	LUNCH	

* Repeated
Saturday:
Concurrent C8

1:45 pm - 2:45 pm	KEYNOTE 4: Trauma-Informed Care: A Case Study in Whole-Patient Care	Edward Machtinger, MD, University of California, San Francisco
2:45 pm - 3:00 pm	STRETCH BREAK	
3:00 pm - 4:15 pm	CONCURRENT SESSIONS	
	B-1 Making Program Scope Explicit: Matching Team Expertise to Patient Population	J. Brian Cassel, PhD, Virginia Commonwealth University, Massey Cancer Center Andrew E. Esch, MD, MBA, Consultant, Center to Advance Palliative Care
	B-2 Getting Ready for Alternative Payment: Managing Your Total Population	Dana Lustbader, MD, FAAHPM, ProHEALTH Care Associates Jill Mendlen, RN, Lightbridge Hospice and Palliative Care
	B-3 Knowledge Is Not Enough: How to Change Care at the Bedside through Training and Systems Change	Brynn Bowman, MPA, Center to Advance Palliative Care Jane Kavanagh, BA, Ariadne Labs Joanna Paladino, MD, Ariadne Labs
	B-4 Fresh Perspectives in Office-Based Palliative Care	Constance Dahlin, MSN, ANP-BC, ACHPN, FPCN, FAAN, Consultant, Center to Advance Palliative Care Abigail Gilbert-Savi, MSN, ACNP-BC, ACHPN, CNP, Presbyterian Healthcare Services Judith Yasunaga, MD, Carle Hospital and Physician Group
	B-5 Clinical Practice Guidelines for Quality Palliative Care: The 4th Edition of the NCP Guidelines	Stacie Sinclair, MPP, LBSW, Center to Advance Palliative Care Gwynn B. Sullivan, MSN, National Coalition for Hospice and Palliative Care Martha L. Twaddle, MD, FACP, FAAHPM, HMDC, Northwestern Medicine Lake Forest Hospital
	B-6 Billing Practices for Hospital-Based Palliative Care Programs	Phillip E. Rodgers, MD, FAAHPM, University of Michigan Philip H. Santa-Emma, MD, FAAHPM, Mount Carmel Health System
	B-7 Bridging the Gap: Making the Case for Palliative Care in Assisted Living Facilities and Continuous Care Retirement Communities	Rikki Hooper, MBA, MSN, FNP-BC, ACHPN, Four Seasons Compassion for Life John Morris, MD, FAAHPM, Four Seasons Compassion for Life
4:30 pm - 5:30 pm	OFFICE HOURS with Seminar faculty for deep-dive Q&A following sessions	

Seminar Agenda

Saturday, November 10

7:00 am - 8:15 am	REGISTRATION AND BREAKFAST	
8:30 am - 9:30 am	KEYNOTE 5: Palliative Care as an Essential Population Health Strategy for Today's Health System	Jay D. Bhatt, DO , American Hospital Association
9:30 am - 9:45 am	STRETCH BREAK	
9:45 am - 11:00 am	CONCURRENT SESSIONS	
	C-1 Evolving Leadership Skills for Midcareer Growth	Constance Dahlin, MSN, ANP-BC, ACHPN, FPCN, FAAN , Consultant, Center to Advance Palliative Care Rodney O. Tucker, MD, MMM , University of Alabama at Birmingham
	C-2 Mapping Communities to Expand Access to Palliative Care	Melanie J. Marien, MS, RPA , Aspire Health Sherika Newman, DO , Montgomery Medical of Atlanta
	C-3 How Health Systems Implement Palliative Care across Settings	Maria T. Carney, MD, FACP , Northwell Health Lori Yosick, LISW-S, CHPCA , Trinity Health
	C-4 Teaching Our Colleagues Core Palliative Care Skills: Strategies for Getting Traction	William F. Bond, MD, OSF St. Francis Medical Center Brynn Bowman, MPA , Center to Advance Palliative Care Linda Fehr, BSN, OSF St. Francis Medical Center Robert Sawicki, MD, OSF St. Francis Medical Center
	C-5 Business Planning for the Community-Based Program: It's Not as Scary as You Think	Lori Bishop, MHA, BSN, RN, CHPN , National Hospice and Palliative Care Organization Tom Gualtieri-Reed, MBA , Spragens & Associates, LLC
	C-6 Understanding Pressures on Hospital Leadership and How You Can Help	Dominick Mastroianni, MD , Florida Hospital Kelley Lamb Moring, MHA , Florida Hospital Lynn Hill Spragens, MBA , Spragens & Associates, LLC
	C-7 Carrying Complexity: Balancing Uncertainty and Hope in Caring for Vulnerable Populations	Lauran Hardin, MSN, RN-BC, CNL , National Center for Complex Health and Social Needs William Kennedy, DO , CareOregon/Housecall Providers Jeanne S. Twohig, MPA , Consultant, Center to Advance Palliative Care
	C-8 Proactive Identification of the Patients Who Need Us Most	Daniel Hoefler, MD , Sharp HealthCare

11:00 am - 11:30 am	COFFEE BREAK
11:30 am - 12:45 pm	CONCURRENT SESSIONS
D-1 The Only Constant Is Change: Principles of Effective Change Management	Tom Gualtieri-Reed, MBA, Spragens & Associates, LLC Turner West, MPH, MTS, Bluegrass Care Navigators
D-2 Keeping Your Head above Water: Successfully Dealing with Growth in Your Community-Based Palliative Care Program	Amy Frieman, MD, MBA, FAAHPM, Hackensack Meridian Health Lori Yosick, LISW-S, CHPCA, Trinity Health
D-3 Improving Access through Telehealth: Doing More with Less	Michael Fratkin, MD, ResolutionCare Dana Lustbader, MD, FAAHPM, ProHEALTH Care Associates
D-4 Becoming a Valued Colleague in the Hospital Ecosystem	Andrew E. Esch, MD, MBA, Consultant, Center to Advance Palliative Care Lisa D. Morgan, LDM Strategies
D-5 Lost in Translation: Incorporating Community Billing and Coding Concepts into Palliative Care	Constance Dahlin, MSN, ANP-BC, ACHPN, FPCN, FAAN, Consultant, Center to Advance Palliative Care Anne Monroe, MHA, Bluegrass Care Navigators
12:45 pm	ADJOURN

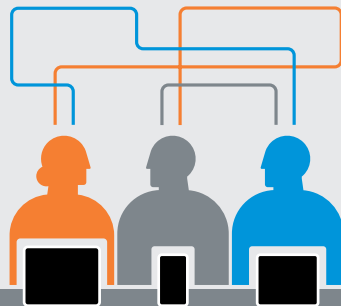
MAKE MEANINGFUL CONNECTIONS

Network with peers and Seminar faculty, share accomplishments, and learn from each other during Seminar special events:

- Poster Session and Reception
- Topic-Specific Networking Lunches
- Office Hours for Small-Group Consulting with CAPC Faculty

Register now

capc.org/seminar



CAPC members receive an additional discount

To learn more about membership, visit capc.org/membership

REGISTRATION FEES

	Early Bird Deadline: Sept 24	Full Rate After Sept 24
Boot Camp OR Payment Accelerator	CAPC Member: \$490 Non-Member: \$640	CAPC Member: \$560 Non-Member: \$725
National Seminar	CAPC Member: \$975 Non-Member: \$1,195	CAPC Member: \$1,050 Non-Member: \$1,350
COMBO Boot Camp + Seminar OR Accelerator + Seminar	CAPC Member: \$1,290 Non-Member: \$1,675	CAPC Member: \$1,480 Non-Member: \$1,880
Fellow/Student	Applies throughout: \$500	

RESERVE YOUR HOTEL ROOM

Rosen Centre Hotel | 9840 International Drive | Orlando, FL 32819

HOTEL RESERVATION DEADLINE: MONDAY, OCTOBER 15

A room block has been reserved at the Rosen Centre Hotel from Tuesday, November 6, through Saturday, November 10. The rate is \$195 per night, single or double occupancy, plus 13.5% occupancy taxes. The discount rate is guaranteed only until the group room block is sold or expires.

For reservations call 800-204-7234, and mention **CAPC Seminar** to receive the group rate. A limited number of rooms are available at our negotiated rate. Reserve yours today!



Icahn
School of
Medicine at
Mount
Sinai

*Patty and Jay Baker
National Palliative
Care Center*



The Center to Advance Palliative Care is the nation's leading resource for palliative care development and growth. We are a national, member-based organization dedicated to increasing access to quality palliative care services for people facing serious illness. We provide hospitals, health systems, hospices, payers, and other health care organizations with the tools, training, technical assistance, and metrics needed to support the successful implementation and integration of palliative care. Learn more at capc.org.

 @CAPCpalliative

 /CAPCpalliative

 #CAPCSeminar18

Register early and save

capc.org/seminar

ALL INFORMATION CURRENT AS OF JULY 12, 2018



Training.
Technical Assistance.
Connections.

MEMBERSHIP

CAPC members receive an additional discount on Seminar registration.

[Learn more at capc.org/membership](http://capc.org/membership)