

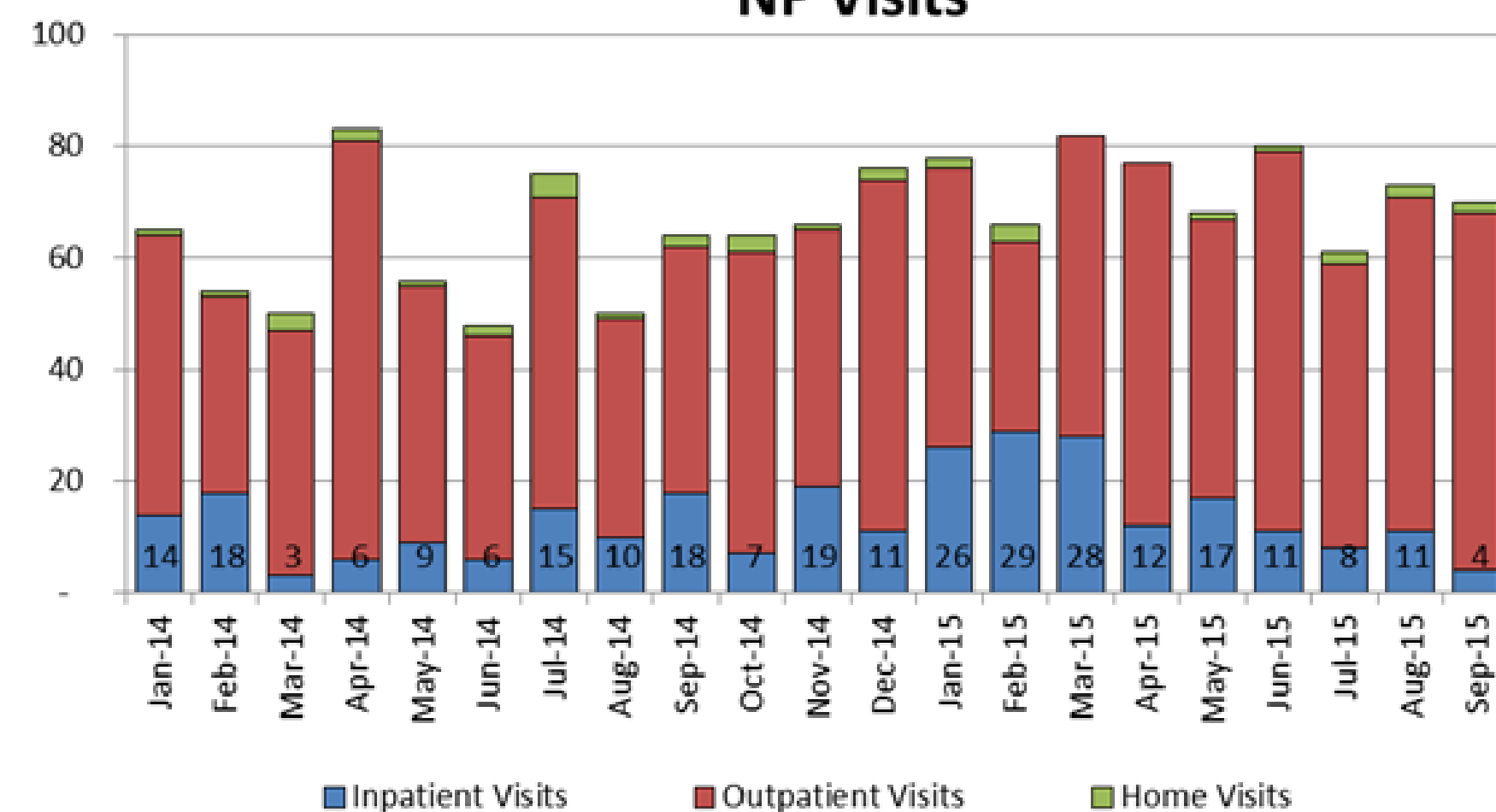
Staffing for a Small, Rural Palliative Care Program

Sally B. Acton, BSN, RN, OCN, MSM, Director, Cancer and Palliative Care Services

Background

Referrals to Palliative Care greatly increased when management of inpatient chronic disease was emphasized. The workload became more than one NP could provide services for.

Schneck Medical Center
Palliative Care
NP Visits



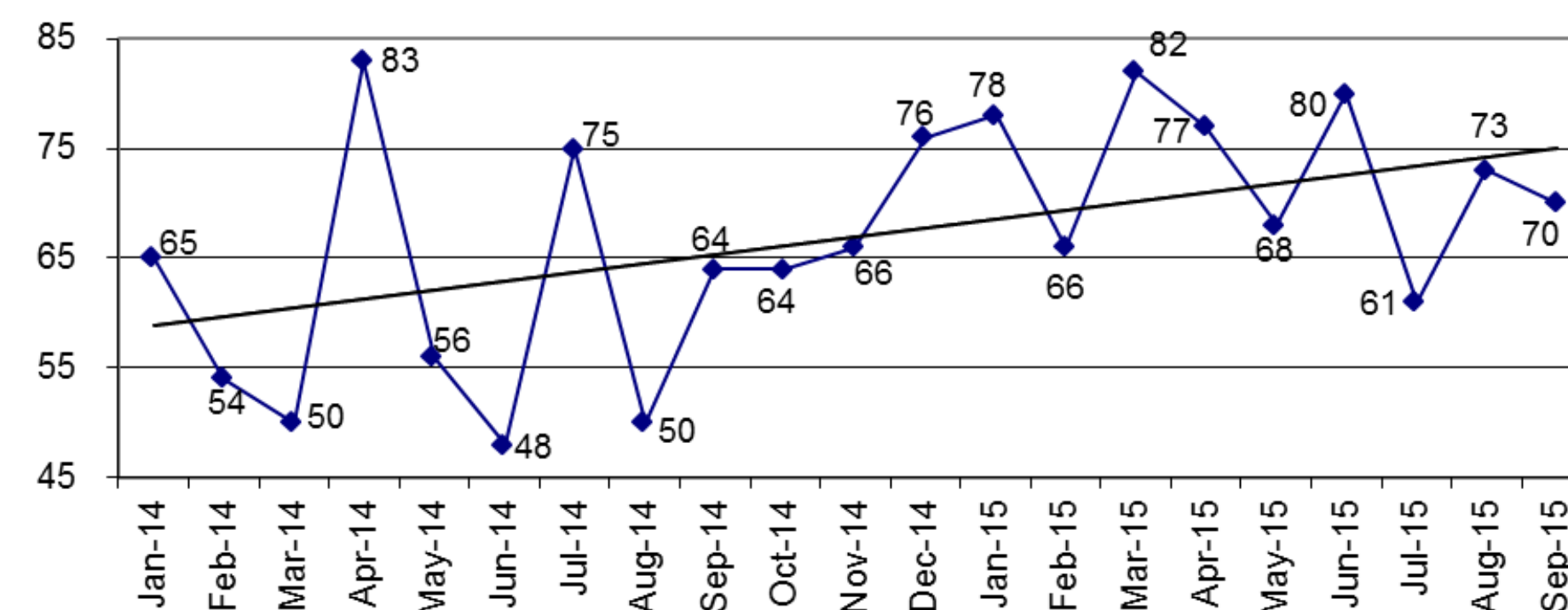
Project Description

- Identified Nurse Practitioner role as critical need in strategic plan
- Partnered with Indiana University-Purdue University of Indianapolis School of Nursing
- Established a cohort of 10 BSN-prepared nurses
 - Paid as full-time equivalent (FTE) for 2 years while attending graduate school
 - Required to work only six shifts per quarter
 - Full tuition paid up front
 - Scholarships granted to offset books and fees
 - Four year commitment to SMC upon graduation
- Allowed an experienced NP to move to Palliative Care

Where we are 2015-2016

- Created a paid Medical Director position in lieu of Physician Champion
- NP provides oncology follow-up (survivorship) visits & hospice support (attending physician, face to face visits for hospice & call support for hospice medical director)
- Utilization of palliative care RN to provide team support for non-billable services
- NP position added to provide inpatient consults and focus on other chronic diseases
- Budget for 2016 includes support staff for 2 NPs
- Budget for 2016 includes office space for Palliative Care NPs and support staff in Cancer Center

Schneck Medical Center
Palliative Care
NP Visits



Palliative Care Team



Donna Butler, MSN, ANP-BC, OCN, ACHPN, FAAPM, has been a nurse practitioner since 2005, focusing on palliative care since 2003. She is certified in oncology, advanced hospice, and palliative care nursing, and a fellow of the American Academy of Pain Management.

Budgeted hours per year: 1250



Dana Prieto, BSN, RN, is an experienced nurse with training in pediatrics, medical/surgical, ICU and oncology. She became an RN in 2007, joining Schneck in 2010. Dana has served on the Palliative Care Team since 2012.



David Hartung, DO, is the medical director of the Palliative Care Program. Dr. Hartung joined Schneck's medical staff in 2005. He is board certified in family medicine.

Budgeted hours per year: 60



Leighana Crenshaw, MSW, LSW, has been a social worker since 1994, joining Schneck in 2000. She has been active on the Palliative Care Team since 2011.

Budgeted hours per year: 208



Anita Collins, MSN, FNP-BC, has been a nurse practitioner since 2008, focusing on pain management. She recently joined Palliative Care Team. She has worked at Schneck Medical Center since 1991.

Budgeted hours per year: 2080



Rev. Stephen Barrett has been a Hospice/Palliative Care Chaplain at Schneck Medical Center since 2011. A pastor for twelve years, he is a member of the Association of Professional Chaplains.

Budgeted hours per year: 195



Colette Mills, BSN, RN, CHPN, has been an RN since 1989. With Schneck Hospice since 2008, she has served on the Palliative Care Team since 2011. She is a certified Hospice and Palliative Care nurse.

Budgeted hours per year: 274



Aaron Banister, Ph.D., is a licensed psychologist specializing in health psychology, cognitive behavioral therapy, and anxiety-based disorders. He has been with Schneck Medical Center since 2013.



411 W. Tipton Street • Seymour, Indiana
812-522-0480 • schneckmed.org

